

# CE Surveyor III \$385 + S/H

**Windows CE** Graphical User Interface

Friendly Touch-Screen Data Input

Interface with **Total Stations**:

**Topcon** Lietz Pentax Leica Nikon

High Point Storage and Calculation Speed

**Alphanumeric & Numeric Point ID**

Colorful **Basemap** background (streets, hydrology, etc.)

Adjustment: compass, transit, least squares

In-Field **Area & Length** Calculation

Powerful **Point Symbology** and **Line Patterns**

## Extensive Coordinate Geometry Functions

**Inverse/Traverse**

**Intersection**

**Area Cut**

**Direction Cut**

**Hinge Cut Area**

**Corner Angle**

**Curves**

**Spiral Curve**

**3 Point Curve**

**Vertical Curve**

**Horizontal Curve**

**Curve By Radius**

**Radius Point**

**Curve Between Tangents**

**Benchmark**

**Station Offset**

**Known Station & Offset**

**Known Coordinates**

**Known Measurement**

**Known Offset**

**Multiple Points**

**T/R/S Least Square Fit**

**Translate/Rotate/Scale**

**Resection**

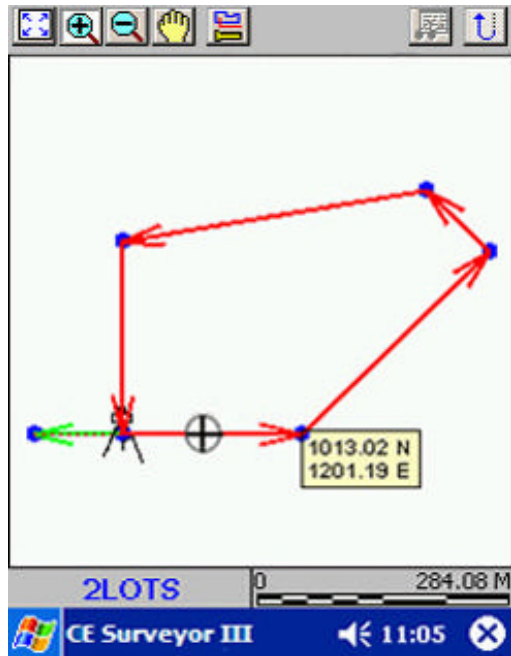
**2-Point & 3-Point**

**Earthworks**



Visit [cmtinc.com](http://cmtinc.com) for a detailed list of functions

Traverse to new stations, take side shots and view coordinate information.



## Field Work Custom Settings:

Collimation Correction

EDM Correction

Prism Constant Correction

Pressure/Temperature Correction

**High Precision to 6 decimal places**

Sequence: BFFB, BFBF, BBFF

**Angle Averaging: Up to 16 sets**

Horizontal & Vertical Tolerance

Remembers Foresight Height

**Distance Measurements:**

**Single or Averaged**

Optional Backsight Distance Display

## Other Highlights:

**Distance & Area Measurement**

NEZ/UTM/SPC & User Defined System

Zoom and Pan Functions

**Heads-Up-Digitizing: Point, Line, Area**

Store Feature/Attribute/Value

Feature/Attribute/Value Editor

**Codes for drawing Lines and Areas**

**Flexible Configuration**

- Angle Unit
- Vertical System
- Azimuth System
- Show Side Shots
- Color/Pattern
- Coordinate System
- Job/Feature List Setup
- Display Stakeout

**Direct Interface with CMT CogoCAD PRO**

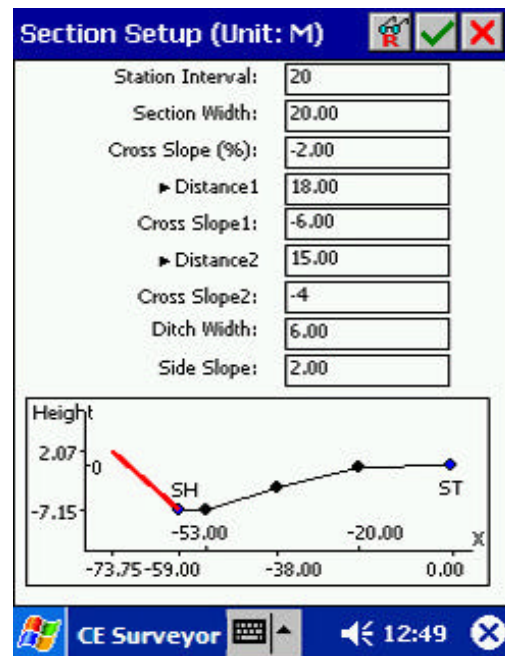
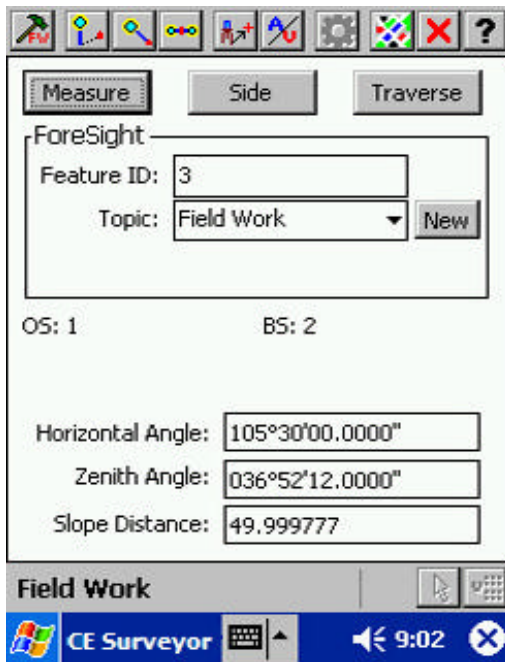
Survey on top of clear Basemap

**Multiple Stakeout Options**

- Point
- Offset
- Slope
- Elevation

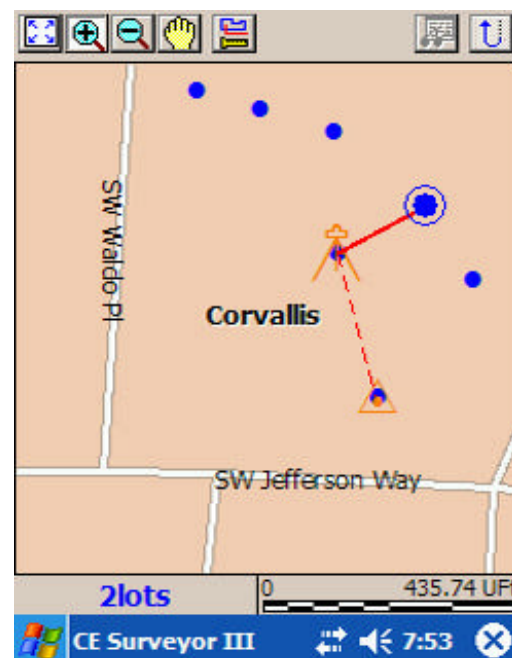
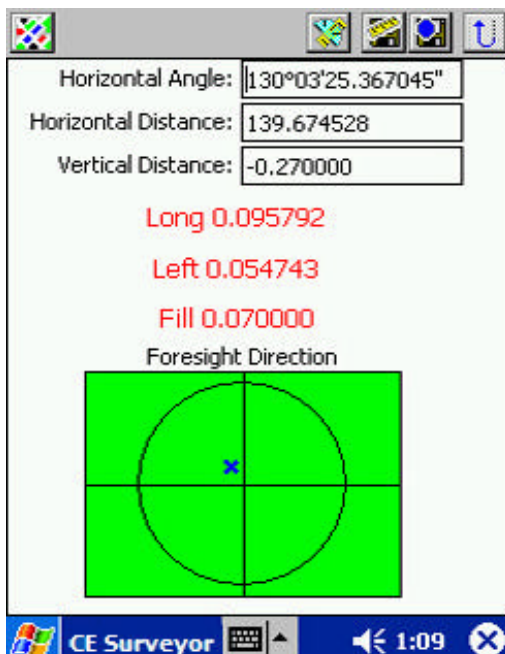
Use the powerful **Traverse function** to create new Occupy Stations when line of sight is obstructed.

**On-screen graphics** provide a helpful visual reference.



Stakeout accurate to **6 decimal places**.

CE Surveyor III makes **staking out** easy.



**CMT Vectorized Basemap**

- Occupies very **small memory space**
- High-quality, multi-layered detailed georeferenced data
- Enhanced for **easy viewing** and beautiful presentation
- **BaseMaps can be loaded automatically**

**\$25 per BASEMAP CD** (typically covers a whole state)

**CMT INC.COM**

email: [support@cmtinc.com](mailto:support@cmtinc.com)