

CMT PDA GPS

PDA with Field CE GIS & PC-GIS PRO Package: \$1885



PDA with high-performance GPS
in waterproof case

Microsoft® Windows Mobile™ 5.0 (Pocket PC)

Built-in GPS and built-in GPS Antenna:

- ▶ **Good performance under tree canopy**
- ▶ **Typical accuracy: 1 to 5 m (real-time)**

Automated Software Installation

Data Integrity and Validation Integrity

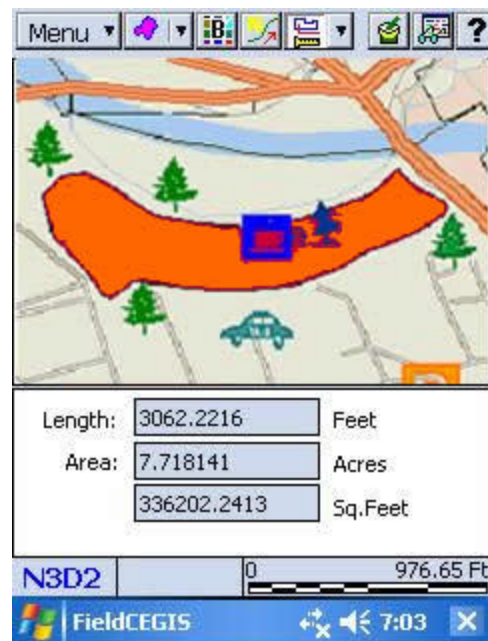
Actual example from Horton Tree Farm in Oregon
(900,000 board feet)

- ▶ Mature and high density Douglas Fir trees on 40 acres
- ▶ Wet ground and wet trees in December 2006
- ▶ Most GPS would fail under such heavy canopy
- ▶ **Built-in GPS still performed well**
 - Area measurement error approximately 0.5%
 - **Consistent tracking** even under heavy canopy
 - PDA survived harsh conditions

Optional software installation available: **CE Surveyor III** or **CE Timber Cruise**

Field CE GIS Highlights

- ▶ Digital Elevation Model (DEM)
- ▶ Show contour lines on your BaseMap
- ▶ Load imagery: MRSID®, PIM
- ▶ **Raster & Vector** data formats supported
- ▶ Thousands of patterns and symbols
- ▶ Adjust **Transparency** of Area Features
- ▶ Free-hand **digitizing** capability
- ▶ **Length, Distance** and **Area** measurements
- ▶ Navigation and Auto-routing with **Voice Directions**
- ▶ **Snap to Node** function
- ▶ **Intelligent GPS port** recognition
- ▶ Data Logging: **By Time, By Distance**
- ▶ **Offset** points or **Traverse** points
- ▶ Nested Points function
- ▶ NMEA-183 GPS data support
- ▶ LLA UTM, SPC, NEZ and **User-Defined** Coordinate Systems supported



Heads-up digitize Points, Lines, Areas

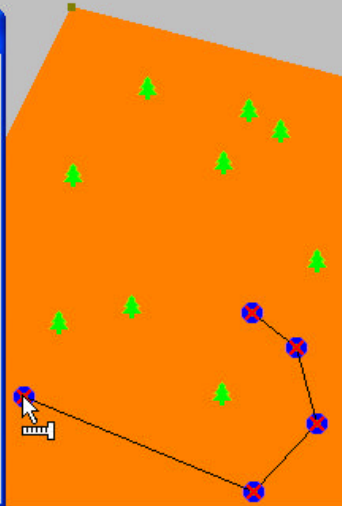
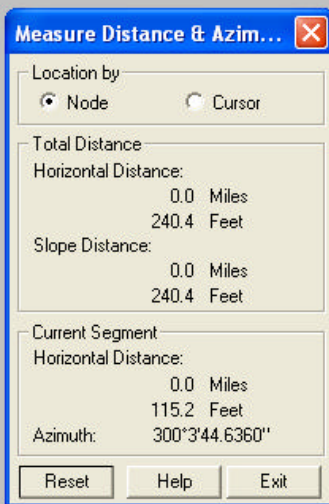
PC-GIS Pro is popular for **Forestry** applications. It is great for **City**, **Utility**, **Farm**, and **Natural Resources** GIS.

HIGHLIGHTS

- ▶ **BaseMaps** with contour lines
- ▶ GIS functions: Split, Join & more
- ▶ **Buffering** for points, lines & areas
- ▶ Image support for:
 - MRSID[®] format
 - **JPEG2000**
 - **GeoJPEG**
 - Geotiff

Heads-up digitizing

- ▶ **Forester's Toolkit** included
- ▶ Huge symbol/pattern library
- ▶ GPS Navigation
- ▶ **Interactive spreadsheet**
- ▶ Easy to Learn & Friendly to Use



Forester's Toolkit Built-in!



Heads-Up Digitize tracts and stands from **georeferenced** aerial photo. Share borders to **eliminate gaps** and overlaps.



Split Tract/Stands into smaller areas along borders or other boundaries.



Combine Tracts/Stands and **join** along common boundaries to form larger areas.



Create "Islands" within a tract or stand. The "island" area is subtracted from the tract or stand to show **net acreage**.



Register Photos using **GPS points** or topo maps. View your photo and topo map side-by-side for **georeferencing**.



Add Roads, Streams, and other Point, Line and Area Features. Digitize the feature and assign a symbol with a click of the mouse.

PC-GIS PRO Software Functions:

- | | | |
|---|---|---|
| <ul style="list-style-type: none"> ▶ Import/Export data: <ul style="list-style-type: none"> ASCII Shapefiles DXF files ▶ GPS: <ul style="list-style-type: none"> Navigation Routing ▶ Heads-up digitizing ▶ Forester's Toolkit | <ul style="list-style-type: none"> ▶ Create: <ul style="list-style-type: none"> Cruising Grids Sampling Plots Buffers ▶ Topic: <ul style="list-style-type: none"> Classification Automatic Labeling ▶ Contours ▶ 3-D shaded relief map | <ul style="list-style-type: none"> ▶ Customizable Plot Preview ▶ Link media to features ▶ Join/Disconnect features ▶ Sort features in table ▶ Geo-reference and Load photo/images ▶ Export to MS Excel[®] format ▶ Feature List builder for Field CE GIS ▶ CE BaseMap conversion ▶ CE image conversion |
|---|---|---|

For more information, please visit cmtinc.com