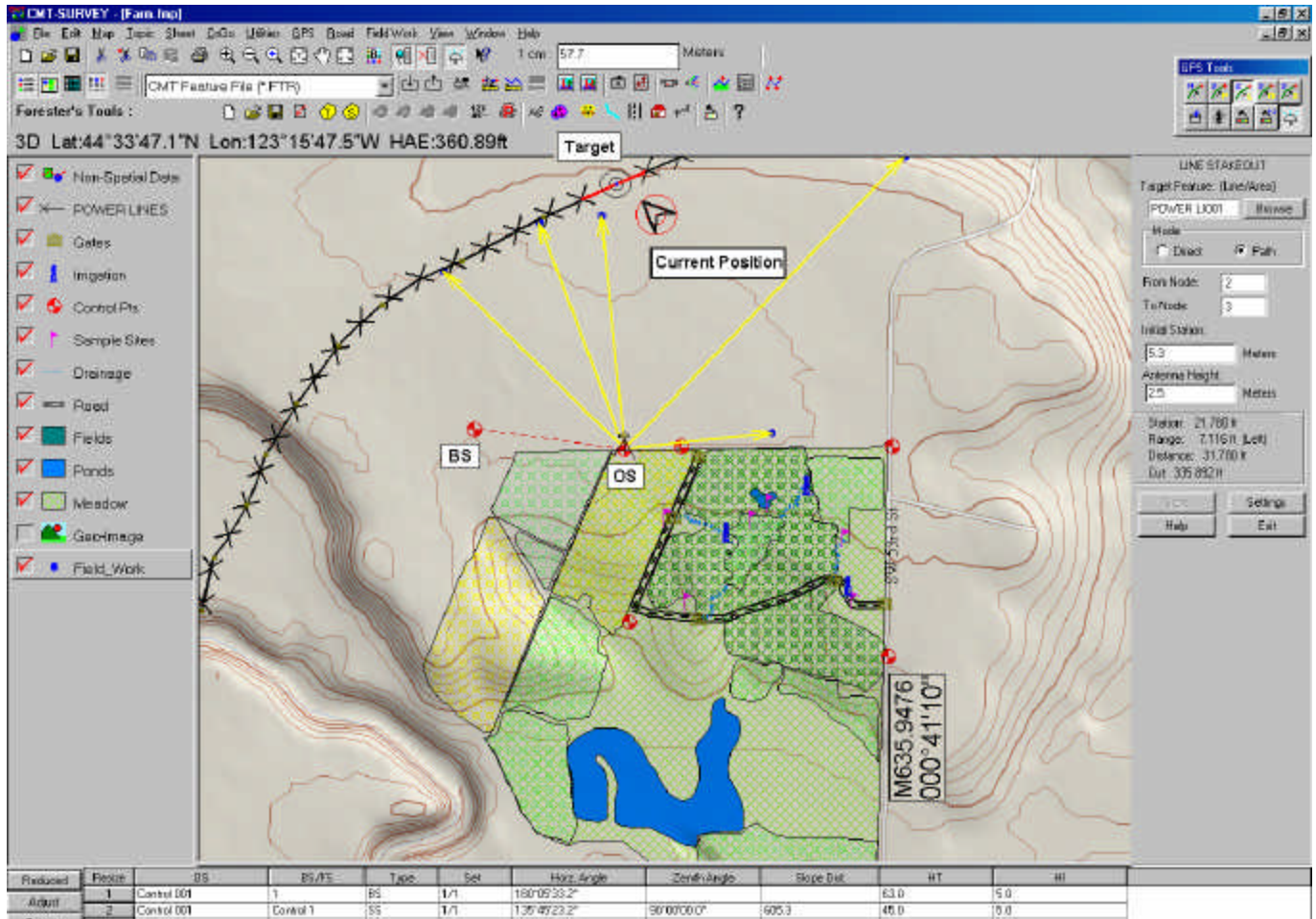


CMT-Survey 07

All in one complete package for surveyors GPS-GIS-Survey-Contour-Volume-Coordinate Geometry
CAD software combined into one package!! **Total Station Interface** **Navigation** **Stakeout**



POWERFUL MAP LABELING

Segment Label Marker Label **Angle Label** Area Label

CONVENIENCE AND POWER

CMT-Survey is designed for Windows 2000/XP/Vista Tablet, supporting full 32-bit color and multi-media using Microsoft's OLE. Run multiple jobs and functions on one computer.

Use the same pen-based or notebook computer to meet all of your **Field & Office** needs!

COMPLETE INTEGRATION

-Full **Total Station Interface**

-Office GPS & GIS

-Full GIS in the field

-Powerful Navigation and Stakeout

-Contour/Volume (Real-Time in the field, Volume on the fly)

-Built in CAD (Coordinate Geometry)

TOTAL SOLUTION FROM START TO FINISH

Let CMT-Survey take over your project from beginning to end. Use it for Design/Layout, on-site Surveying (both GPS and Total Station), Stakeout and final map output.

HIGH PRECISION APPLICATIONS

Use with GPS or Total Station to generate accurate Contour Maps and compute Cut and Fill Volumes in the Field; Point, Offset and Slope Stakeout of road designs.

EASY TO LEARN AND FRIENDLY TO USE

The same software used in the Field is used in the Office. **Eliminate wasted time transferring data between Field System and Office Systems.**

FLEXIBLE

Works with any GPS with **NMEA-0183 output**, CMT GPS Receivers, and most popular Total Stations.

CMT Survey 07 - The Professional Mapping Solution \$2,495.00

CMT Survey is an **all-in-one complete package for surveyors and field professionals**. This software combines the power of **Total Stations**, Dual Frequency GPS, COGO functions, Contour/Volume and full GIS Mapping capabilities into one software utility

With an **XP Tablet** or a Notebook Computer you can run CMT Survey in the field and interface with your GPS unit or total station. For example, load an aerial photograph or DRG topo map to view and determine the proper layout for a pipe/cable project. Plug in your GPS or Total Station: to do the **survey**, **design**, and **stakeout**. Also, CMT Survey can guide your heavy machinery operators by using the powerful line stakeout function. **View real-time line length and offset**.

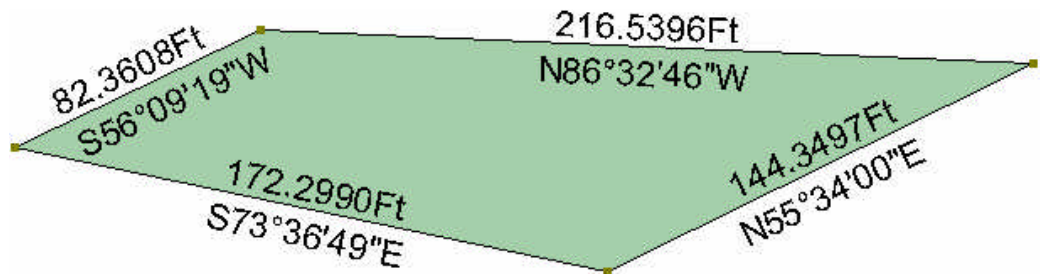
The flexibility of CMT Survey allows for productive use over a wide range of applications such as: cable/pipe layout, **golf course design**, precision farming, site design/stakeout, **forestry**, construction and more.

Standard functions include:

- ▶ Total Station Interface
- ▶ **L1 & L1/L2 GPS Interface**
- ▶ COGO Function
- ▶ Road Design
- ▶ Extensive Mapping Functions
- ▶ Point, Line, Area Symbology
- ▶ Real-Time Navigation
- ▶ **Stakeout Functions**
- ▶ Field/Office GPS/GIS Data Collection
- ▶ Contour/Volume Functions
- ▶ **Aerial Photo Georeference**
- ▶ GeoTIF, **MRSID**[®], GeoJPEG, JPEG2000 support

Powerful Map Labeling:

- ▶ Segment Labeling
- ▶ Marker Label
- ▶ **Angle Label**
- ▶ Area Label



Other Highlights of CMT Survey 07:

- ▶ Full **customization** of software tool bars and menu items.
- ▶ Ability to create **CONTOUR** maps for a specific topic or create contour lines for a specific area.
- ▶ Support for **DEM** (Digital Elevation Model) data to create contour lines, 3D shaded relief overlays. Drape topo maps on top for shaded relief on your topo map. **Elevation Profiling** available to see changes in elevation over a user-specified transect.
- ▶ Create features from **Deed Call** text, or create Deed Call text from existing features.
- ▶ **Create Cruising Grid Points** or **Grid Lines** with **Offset** option.
- ▶ Ability to attach **Voice Recording** to any map feature.
- ▶ **Import/Export** Sheet View data from/to Microsoft[®] **Excel** or **Access**.
- ▶ Support for **ASCII EXPORT of multiple Topics** as well as Line and Area features.
- ▶ Adjust **Transparency** of area features and loaded images.
- ▶ Powerful digitizing functions let you easily add **Point**, **Line** and **Area** Features to your map.
- ▶ Display **Bearing or Azimuth** in the status bar when digitizing.
- ▶ Load another job file as a **Background Map** to use as a guide for digitizing or reference.
- ▶ Create a **geo-referenced image** from the displayed map or by cropping from a loaded image.