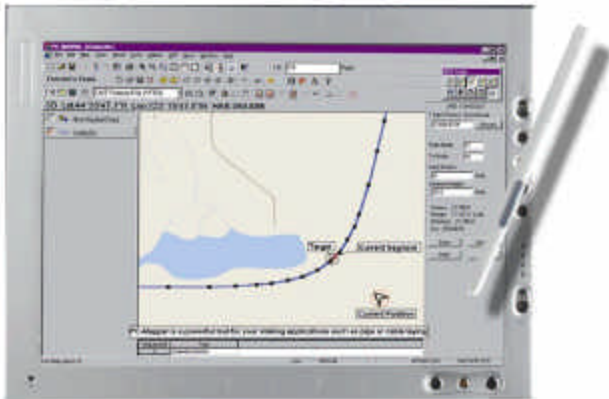


PC-Mapper 07

The complete solution

From field....



Convenience and Power

PC-Mapper was designed for field and office hardware: run it on your Tablet PC, notebook or laptop and also run the same software on your desktop PC.

Run multiple jobs and functions on one computer. Use the same software to meet all of your GPS/GIS/Survey needs.

Easy to learn & friendly to use

Eliminate wasted time transferring data between field and office systems.

Field and office personnel can learn how to operate the software very quickly.

Contact CMT to see how you can demo a copy of PC-Mapper today!

Simple Interface

PC-Mapper's intuitive interface allows quick access to all powerful functions in just one or two clicks.

Get measurements & other useful numbers in the field without running complex routines.

Complete Integration

- Full GIS in the field and office
- Office GPS & GIS
- Built in CAD and Coordinate Geometry
- 2D and 3D Contour map output
- Cut/fill Volume calculation
- Convenient Navigation with routing
- Stakeout for inspection/layout
- Deed call text output and full feature labeling
- Digitization over background maps

...to Office



CMTINC.COM
Corvallis Microtechnology, Inc.

413 SW Jefferson Ave. (541) 752-5456
Corvallis, OR 97333 (541) 752-4117

PC-Mapper: A super-set of PC-GPS & PC-GIS

The Total Mapping Solution



Stakeout
Point, line, offset
& slope stakeout



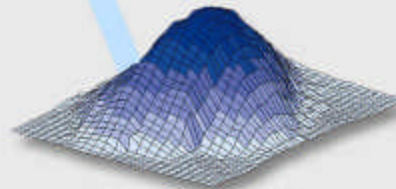
Real-time GPS/GIS
Track & collect GPS on
moving Basemaps/images
& store GIS field data



BaseMaps
Automatic BaseMap
loading w/ multiple layers



CoGo Tools
Many powerful Cogo tools:
Intersection, Traverse,
Curves & more!



Contour/Volume
Use GPS data for accurate
Contour maps. Compute
Cut/Fill Volumes in the field!

Enhancements

- Includes **all functions in PC-GPS**
- **Basemaps with contour lines** & shaded relief
- Geotiff, **GeoJPEG, JPEG2000**
- **MrSID® format** image support
- Thousands of **editable patterns/symbols**
- **Buffering** and improved Create Grid function
- Project Toolkit with **customizable menus & toolbars**
- Export to **Microsoft® Excel & Access**
- Powerful **segment labeling** and **deed call** text
- **Image transparency adjustment**

Other Highlights

- Line Stakeout for pipe/cable laying
- NEZ coordinate support
- Forbidden Area Warning
- Powerful tool for harvest machinery
- Single and Dual Frequency GPS
- C/A Code & Phase Differential
- Google Earth® Interface

CMTINC.COM
email: support@cmtinc.com