

# PC-MAPPER 09

**PC-MAPPER** is a powerful software tool for **GPS/GIS Data Collection**, **Natural Resource Management**, **GPS Surveying**, **Precision Farming** and **Automated Tree Harvesting**.

Runs on Microsoft **XP**, **VISTA**, **Windows 7** Desktop PC, Notebook PC and **Tablet PC**.

- **Real-Time Navigation**

Track your **real-time GPS** position on top of a Basemap, a DRG map, or a geo-referenced aerial photo.

**Moving Map** automatically **re-oriens** and **scrolls** as you move along. Navigate along a pre-defined route or select any destination on-the-fly. Use any GPS with **NMEA-183** output.



- **All-in-One Professional Mapping**

Use the same PC to plan the mission, collect **GPS/GIS data**, digitize Points, Lines and Areas, create buffer areas, label and print out the completed map, as well as manage the **GIS** databases.

- **Background Map**

Load a background map in **GEOTIF**, **GEOJPEG**, **JPEG2000**, **ECW** or **MRSID**® format.

- **Google Earth**® Interface

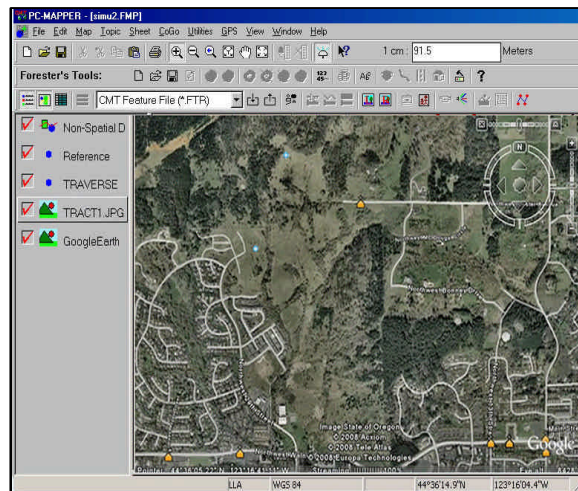
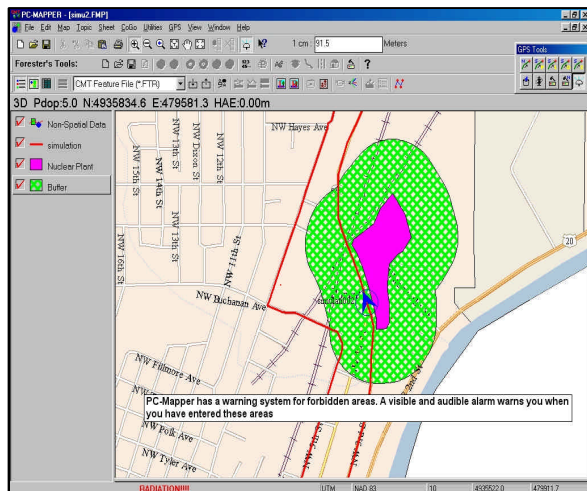
Capture geo-referenced maps from **Google Earth**. Project your Feature data onto **Google Earth**.



- **Job Presentation**

Output the Plot to a printer, or save it to an image file or a **PDF** document.

*Capture Geo-referenced Map  
from Google Earth*®



Visit [www.cmtinc.com](http://www.cmtinc.com) to download an evaluation version.

## ... Other Highlights

- **Data Compatibility**

Work with job files in **SHP**, **DXF**, **ASCII** and the native **FTR** and **PMP** formats.

Import/Export Feature data from/to **Microsoft<sup>®</sup> Excel** and **Access** files.

- **Supplemental Database Management**

Keep historical data about your Features.  
Query the database and produce reports.

- **Image Transparency**

Adjust the **transparency** of Area Features and bitmap image layers.

- **Labeling**

Automatically label the Features with IDs, **areas**, distances and other attributes.

- **Auto-Routing**

Select start and end points and let PC-Mapper calculate the most efficient route on the road map. Follow the route with turn-by-turn directions (including time and distance).

- **GPS Stakeout Functions**

Perform Point, **Line**, Offset, and Slope stakeout. (e.g. Line Stakeout for laying cables and pipes)

- **Surveyor CAD Functions**

**Deed Calls**, **Traverse** and over 20 coordinate geometry (**COGO**) functions, including: Intersection, Least-Squares Fit, Offset Stakeout, Curves, etc.

- **Create Grid**

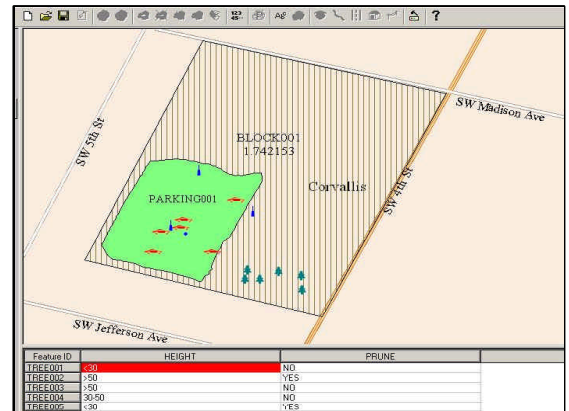
Create reference grid points and grid lines on your map to facilitate sample data collection.

- **Contour/Volume Functions**

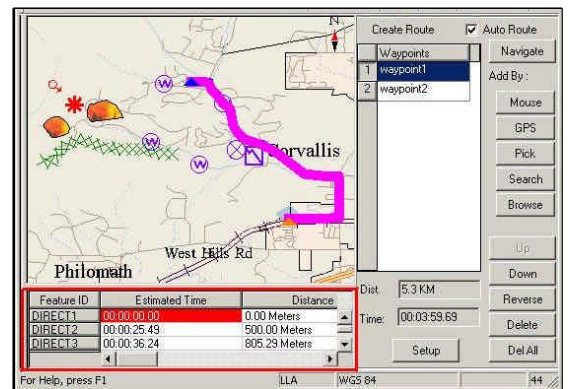
Use your GPS data to generate accurate Contour maps. Compute **Cut** and **Fill** Volumes **in the field**.

- **Single & Dual Frequency GPS Input**

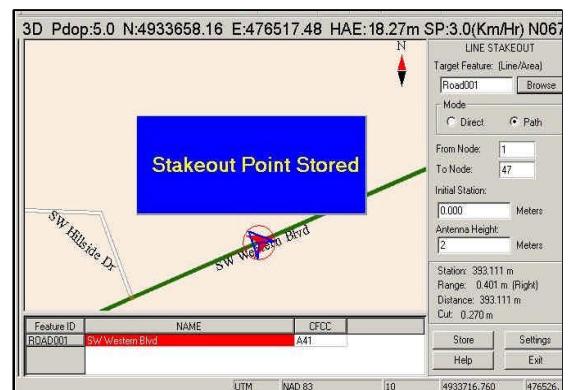
- **Geoid Model and NEZ Coordinate System Support**



**Automatic labeling of Features**



**Instantly create an Auto Route to your job site**



**Use Line Stakeout for Pipeline Layout**