

# iCMTGIS

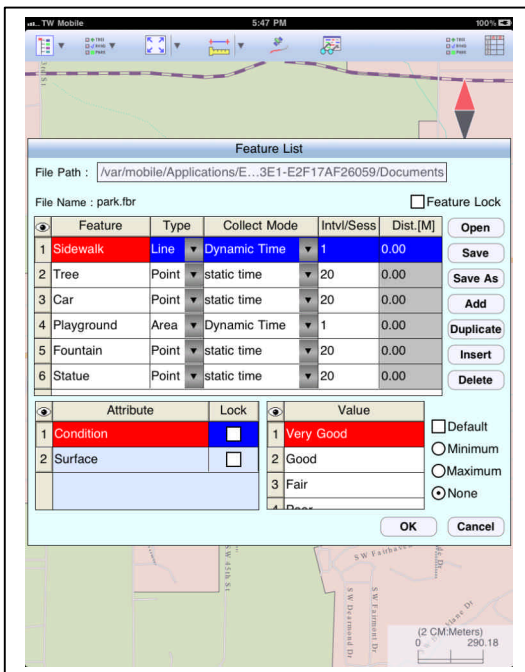
Use the **iCMTGIS field data collection program** designed by Corvallis Microtechnology, Inc. to turn your **iPADâ** into a powerful data collector. Let it help you record the data that you need and tag it with date, time, spatial coordinates and any other relevant information. View the data on top of a background image in portrait or landscape mode. Send the data to your office so it may be put to use immediately.

iCMTGIS is **user-friendly** and **easy to learn**. It is based on our proven Field CE GIS data collection program. Our experience with the satisfied users of the Windows-based and Windows CE-based CMT applications gives us confidence that the iCMTGIS will help you increase your productivity as well. Please keep in mind that continued use of GPS running in the background can dramatically decrease battery life. iCMTGIS lets you easily toggle the GPS on or off.

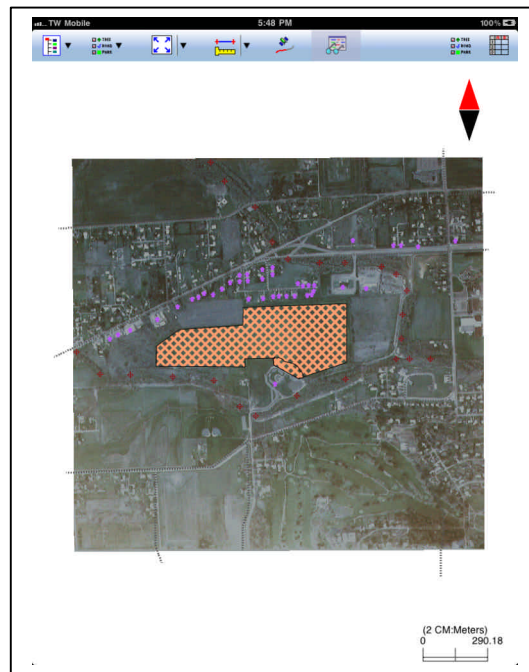
iCMTGPS is compatible with the **CMT PC-GIS PRO** software, which was rated **Number One** in the June 2005 issue of the Journal of Forestry for the level of functionality at an affordable price. PC-GIS PRO includes the Forester's Toolkit. Foresters, farmers, wildlife specialists and other land and natural resource managers can customize the Toolkit for their specific applications.

You may use PC-GIS PRO 9 on your MacIntosh in PC mode to view and work with the data collected using the iCMTGIS. For example, you may **geo-reference** an Aerial Photo, do **heads-up digitizing**, link photo, video or voice recording to the features, manage supplemental data for the features, set up user-defined coordinate systems, split an area, **create buffer zones** around an area, print a completed map, save a map in **PDF format**, import/export data from/to Microsoft® **Excel** and **Access** files, or in **ASCII**, **DXF**, **Shapefiles**, and the native **CMT PMP** formats.

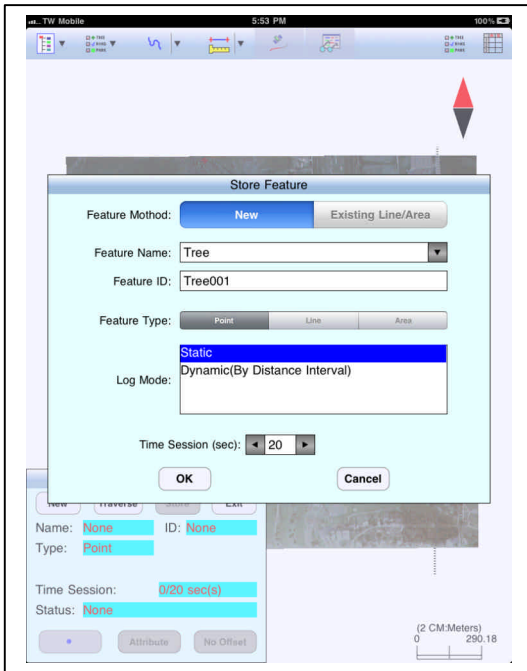
## Highlights of the iCMTGIS Application Software:



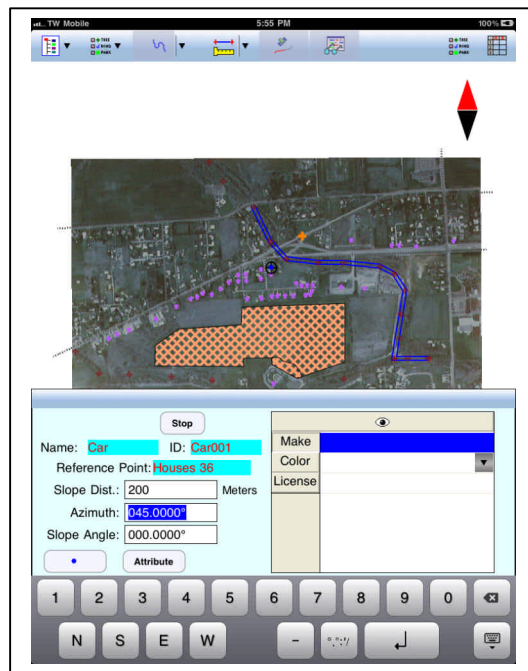
Pre-define feature descriptions.



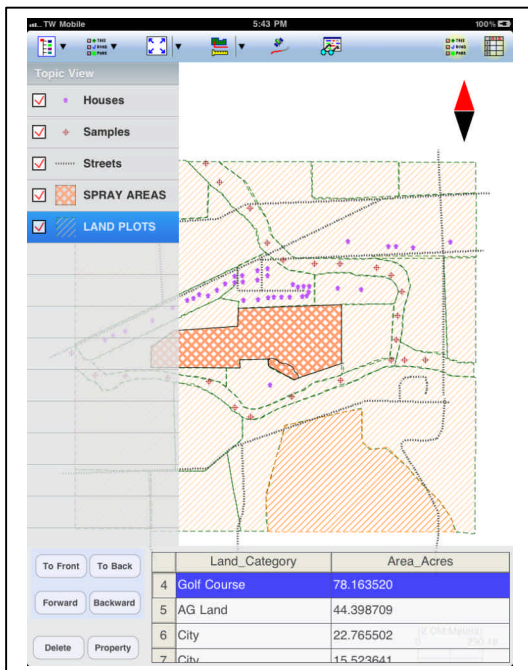
Display GOOGLE map, or load a background image as reference.



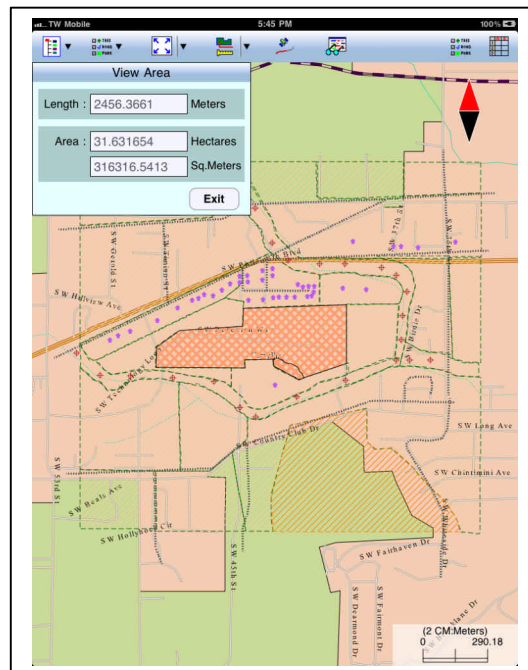
Record Points, Lines and Areas.



Traverse a path or an area.



View Feature descriptions.



View Lengths, Areas & Perimeters.

You may also create a grid for your job site, manually **digitize points, lines and areas**, label features with symbols, IDs and descriptions, view features in LLA, UTM, SPC, or NEZ coordinate system, Import/Export data in **Shapefile** format, and save data in PMP format for use with PC-GIS PRO and other CMT PC applications.

**URL for iCMTGIS:** <http://itunes.apple.com/us/app/icmtgis/id409254102?mt=8>

Email [support@cmtinc.com](mailto:support@cmtinc.com) to request a quick guide for iCMTGIS.

Visit <http://icmtgis.wordpress.com> to read Q&A posts about the CMT iOS apps.

Visit [www.cmtinc.com](http://www.cmtinc.com) for additional information about the CMT products.